

Our Mission:
Assess Abilities
Empower Employment
Change Lives



The Precision Institute looks beyond the disability to uncover each individual's unique abilities, and create a pathway to employment for neurodivergent adults!

April 2025 Newsletter



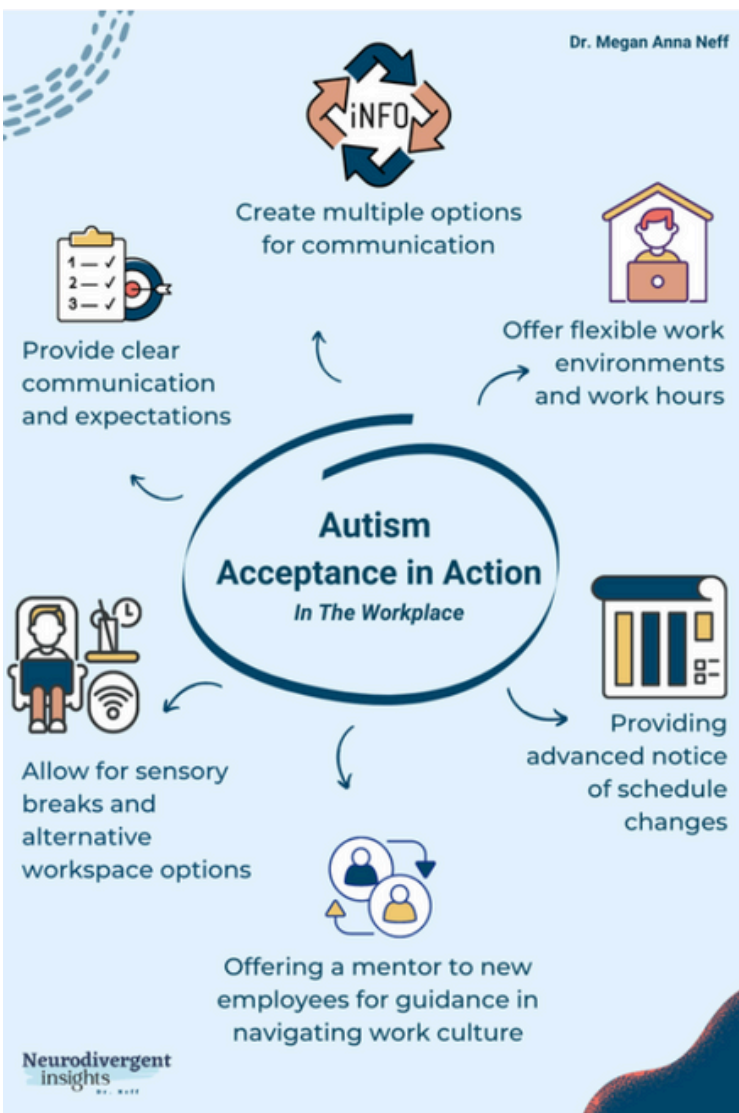
Note from the Executive Director

Happy Spring!

April is Autism Acceptance Month, but The Precision Institute practices and embodies Autism Acceptance Year-round. Our work focuses on acceptance, inclusion, empowerment, and employment of neurodivergent adults.

We work with those impacted by autism, as well as individuals with other intellectual / developmental disabilities, to discover their unique skills and abilities, and prepare them for meaningful employment.

Here are some simple strategies to accept and support neurodivergent individuals in the workplace:



The Precision Institute recently received Bank of America's Neighborhood Builders Award, an award given to only two (2) non-profit organizations in each of Bank of America's regions.

As a Neighborhood Builder, The Precision Institute will receive \$200,000 in unrestricted funds, AND leadership development for The Precision Institute's senior staff members.



THANK YOU
Bank of America
for this
transformational
award!

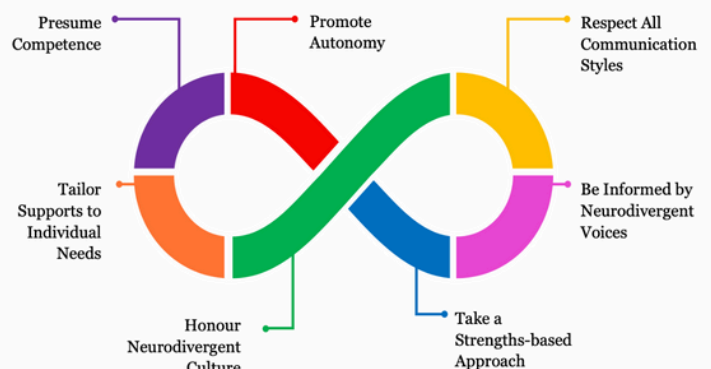
Driving Simulator Program - Success Story

Only 1 in 3 teens / adults with autism have their drivers license, which is an immense barrier to employment. We offer a Driving Program with a Curriculum and Driving Simulator designed specifically for neurodivergent teens & adults to gain the confidence and skills necessary to obtain their learners permit, and ultimately their drivers license.



CONGRATULATIONS
to Philip -
Driving Simulator
participant who
recently got his
driver's license!

Neurodiversity Affirming Practice



What recent candidates are saying about our Assessment & Training Program!

"The program gives people without typical qualifications the opportunity to demonstrate their character, when most companies would automatically filter them from standard hiring processes."

"I feel that this program facilitated a growth environment with a variety of people from different backgrounds and starting points. This assessment accurately showed what it might be like to work in a corporate setting and gave me the chance to prove my employability."



YOUR support provides:

Access to the Assessment & Training Program

NO Participation Fee

High Tech & High Touch Curriculum

5:1 Candidate to Instructor Ratio

A path to a Career, not just a Job!



Help celebrate Autism Acceptance Month by donating to The Precision Institute!
With your support we can Assess MORE Abilities, Empower MORE Employment AND
Change MORE Lives!

Donate Online: <https://theprecision.institute/donate-now/>

Donate By Mail: Checks made payable to The Precision Institute
Two Righter Parkway, Suite 215, Wilmington, DE 19803

Donate Via ACH Wire Transfer: Contact Janet.Atwater@theprecision.institute



FOR MORE INFORMATION VISIT OUR WEBSITE:

www.theprecision.institute